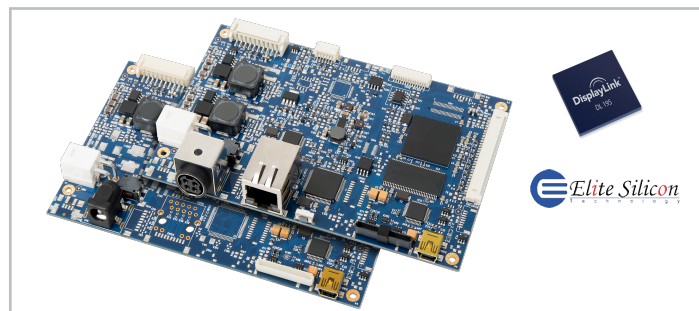


USB / Ethernet Controller Board with optional 4-/5-Wire Touch Controller

USB / Ethernet Controller Board with optional 4-/5-Wire Touch Controller

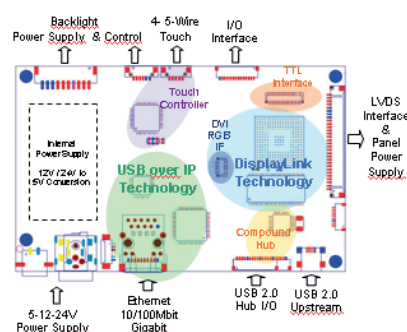
d.screen-Hybrid is a cost-effective innovative board solution for high performance USB 2.0 and / or Ethernet connected displays based on DisplayLink's DL1x5 device family and EliteSilicon's USB over IP technology.

It is designed to act as a direct interface between either USB 2.0 or Ethernet network and LCD TFT displays from VGA up to Full-HD/WUXGA/QWXGA. A highly efficient powermanagement makes the d.screen-USB-Hybrid the perfect solution for portable multifunctional monitors.



Features

- USB-Interface
- Ethernet-Interface 10/100 Mbit & Gigabit
- Optional DVI / RGB-analog Interface
- 12/24V or 5V-only power supply supports also large displays from a single 24V power supply
- On-board USB 2.0 Highspeed Hub
- On-board 4-/5-Wire touch-controller

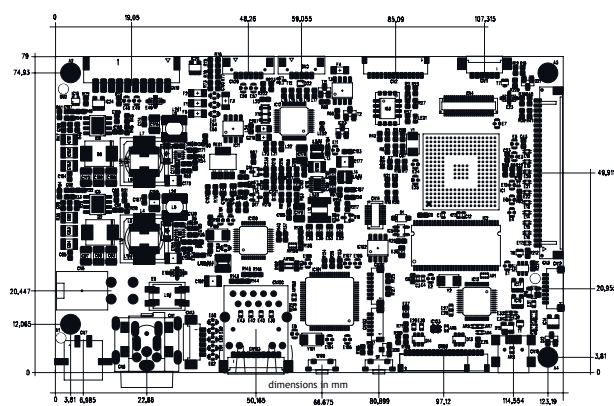


DisplayLink Technology - DL125/165/195

- ✓ Connect a PC with USB 2.0 port directly to any LCD TFT panel
- ✓ Lossless compression protocol
- ✓ Supports Windows
- ✓ Supports Apple Mac OS
- ✓ Supports screen rotations and Mirror mode or extended desktop
- ✓ Supports resolutions up to Full-HD / WUXGA / QWXGA
- ✓ Linux support
- ✓ Up to 6 Displays are supported

Elite Silicon Technology

- ✓ SoC USB-Server solution
- ✓ Supports 10/100Mbase-Tx and Gigabit Ethernet
- ✓ Supports Interrupt-, Control-, Bulk- and isochronous USB transfers
- ✓ Supports DHCP, configures IP Address automatically
- ✓ USB 2.0 host controller, USB1.1/USB2.0 (Hi-speed) compliant
- ✓ Driver fully Microsoft WHQL signed



Specification

Supported Panel Resolutions (LVDS / TTL)

	DL-195	DL-165	DL-125
Maximum Resolution	1920 x 1200 2048 x 1152	1600 x 1200 1920 x 1080	1280 x 1024 1440 x 900
Integrated USB 2.0	✓	✓	✓
Dual Core Decode Engines	✓	✓	
DisplayLink DL Z+ Compression	✓	✓	✓

Touch Controller - optional

- Resistive Technology 4/5-Wire (auto-detection)

Input Voltage

- 12/24V or 5V Only (Backlight voltage = Input Voltage)

Environmental

- Operating Temperature: 0°C to 70°C
- Relative Humidity: 5%-85%, non condensing